



Contact:

Artist Grade Concrete Acid Stain Color Chart

Final color is determined by Your particular piece of concrete.

As each piece of concrete is **different** and **unique**, each piece of concrete will **color differently**, allowing **variance** and **beauty** to unfold, giving each piece of concrete it's own **unique interpretation** of the color's used.

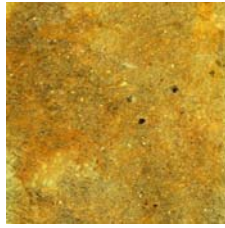
Camouflage Your Concrete!



Faded Linen
usually has more **Creams, Soft Yellows,** or **Soft Buffs,** can have areas of **Off Whites** and **Linen Creams.**
color: pastel to light



Buckskin
is usually more of a **Tan,** and/or **Bufs,** and/or a **Light Browns** mix.
color: light to medium



Sandstone
usually has more **Golds** or **Yellows** than **Bufs** and sometimes some **Burnt Ambers.**
color: light to medium



Golden Sand
is usually more of a **Caramel** or **Cola.** Can be an **Amberish Gold,** with more **Golds** in it's unique combination.
color: light to medium



Island Sand
is usually a **Sandy, Buffy,** or **Rusty Tan.**
color: light to medium



Honey Oak
is usually a warm mix of a **Golden** undertone with a **Brown** overtone, sometimes with **Ambers** coursing through.
color: light to medium



Canyon
is usually more of a **Reddish** or **Brownish Amber** with a **Golden** undertone.
color: medium to dark



Terra Buff
is usually more of an **Amber** or **Earthtone Terracotta,** than a **Red Terracotta,** though it can have a warm mix.
color: medium



Rosewood
is usually a **Reddish** with a **Golden** undertone.
color: medium to dark



Saddle
is usually a **Reddish, Burgundyish,** or a **Mahogany,** much like a **Red Leather Saddle.**
color: medium to dark



Mocha
is usually more of a **Beige** and/or a **Medium Brown** mix.
color: light to medium



Western Brown
usually has more of a **Medium Brown** mix with a **Worn Tan** or **Gold-ish** undertone.
color: medium to dark



Leather Brown
is usually a medium to dark **Leathery Brown** mix.
color: medium to dark



Coffee
is usually more of a **Dark Walnut** with **Blacks** and **Dark Browns.**
color: dark



Brownstone
is usually more of a **Brownish Black.**
color: dark



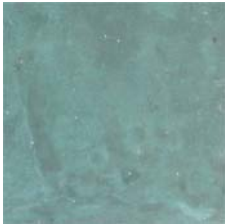
Riverstone
can be **Greys** or **Browns,** though it is usually a mix of light and dark.
color: light to dark



Weathered Wood
can also have more **Greys** or it can have more **Browns,** depending on the concrete. It can go darker or lighter.
color: light to dark



Onyx
is about as **Black,** as it gets.
color: dark



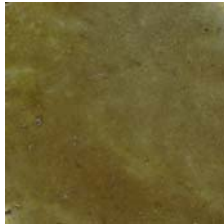
Turquoise
is, well, a **Blue Turquoise.**
color: light to medium



Sea Mist
is usually a soft mix of **Light Blues** and **Light Greens.**
color: pastel to light



Mossy Green
is usually a **Light Pastel Green** with hints of **Browns.**
color: pastel to light



Slate
is usually a **Darker Green** undertone with either a **Dark Grey** or **Brown** overtone.
color: medium to dark



Bronze Green
can be a **Green,** a **Light Bronze,** a **Dark Bronze,** or a combination.
color: light to medium

Reacting with the minerals already present in your concrete, which were randomly dispersed when the concrete was poured, acid stain beautifully achieves natural color variances, highs and lows, darks and lights, marbling and mottling, with small imperfections and hairline cracks adding unique character effect.